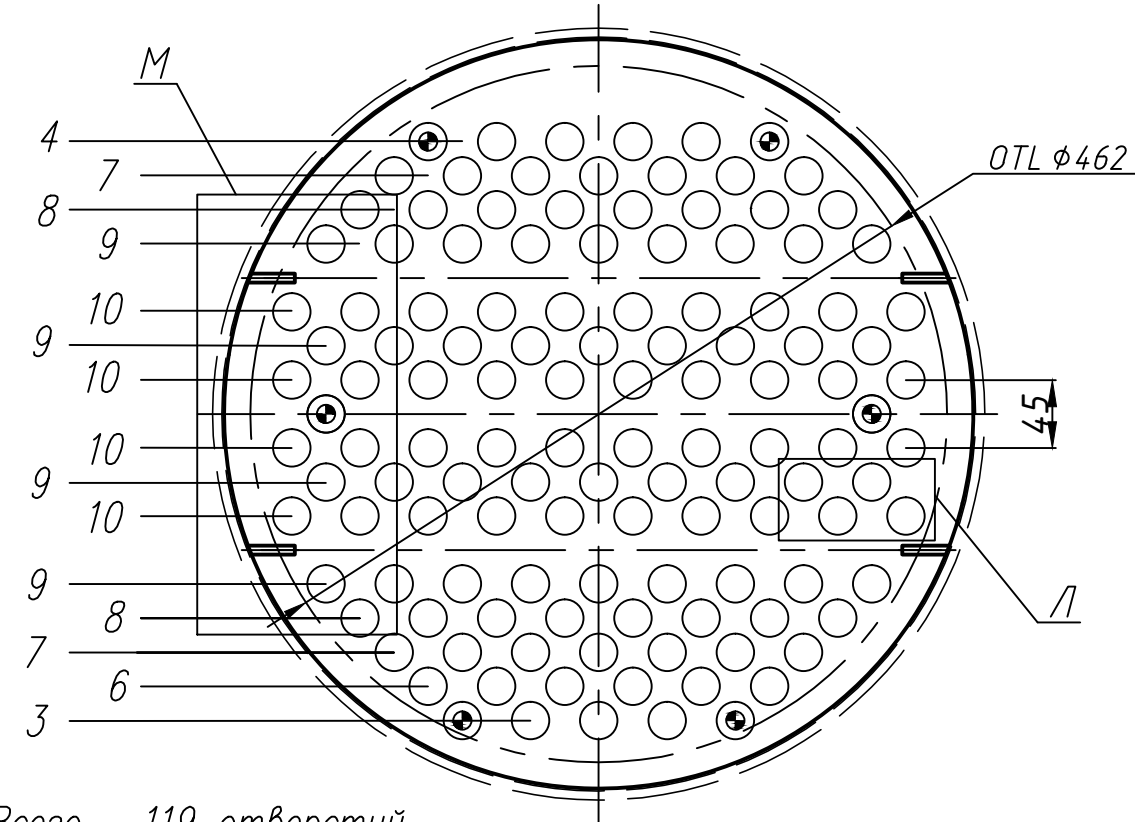
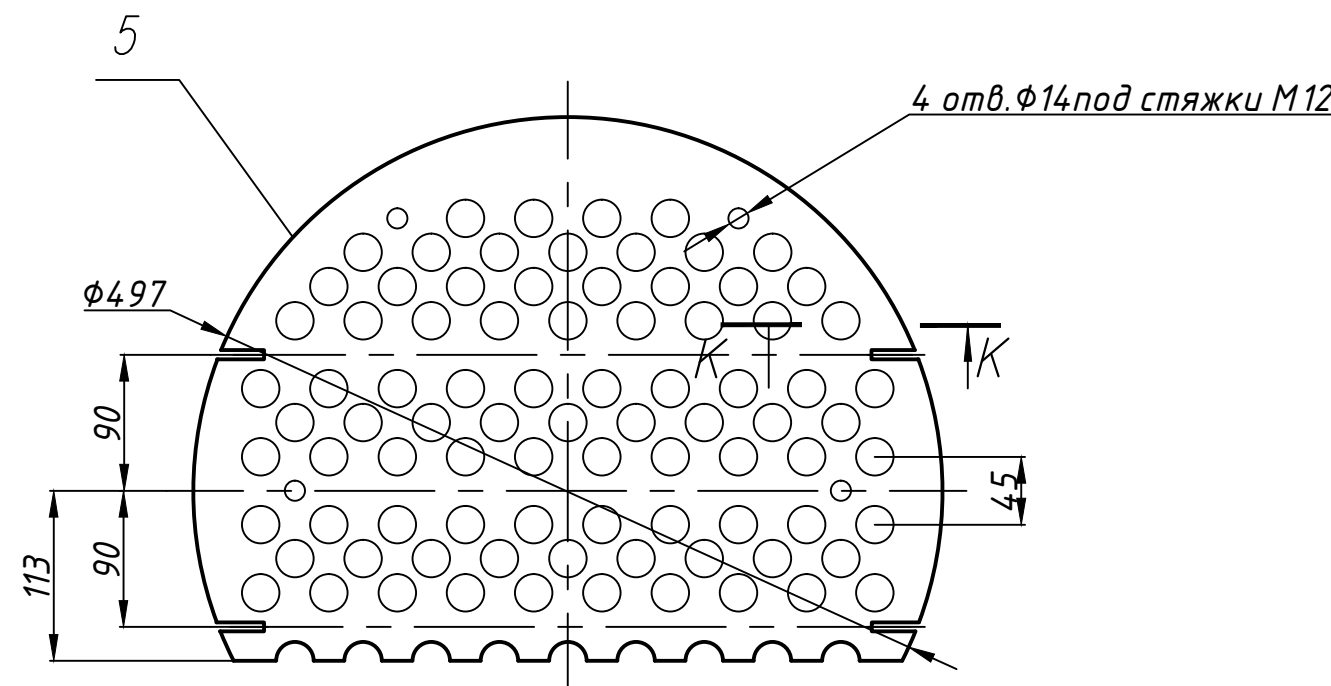


В-В (1:5)(1)

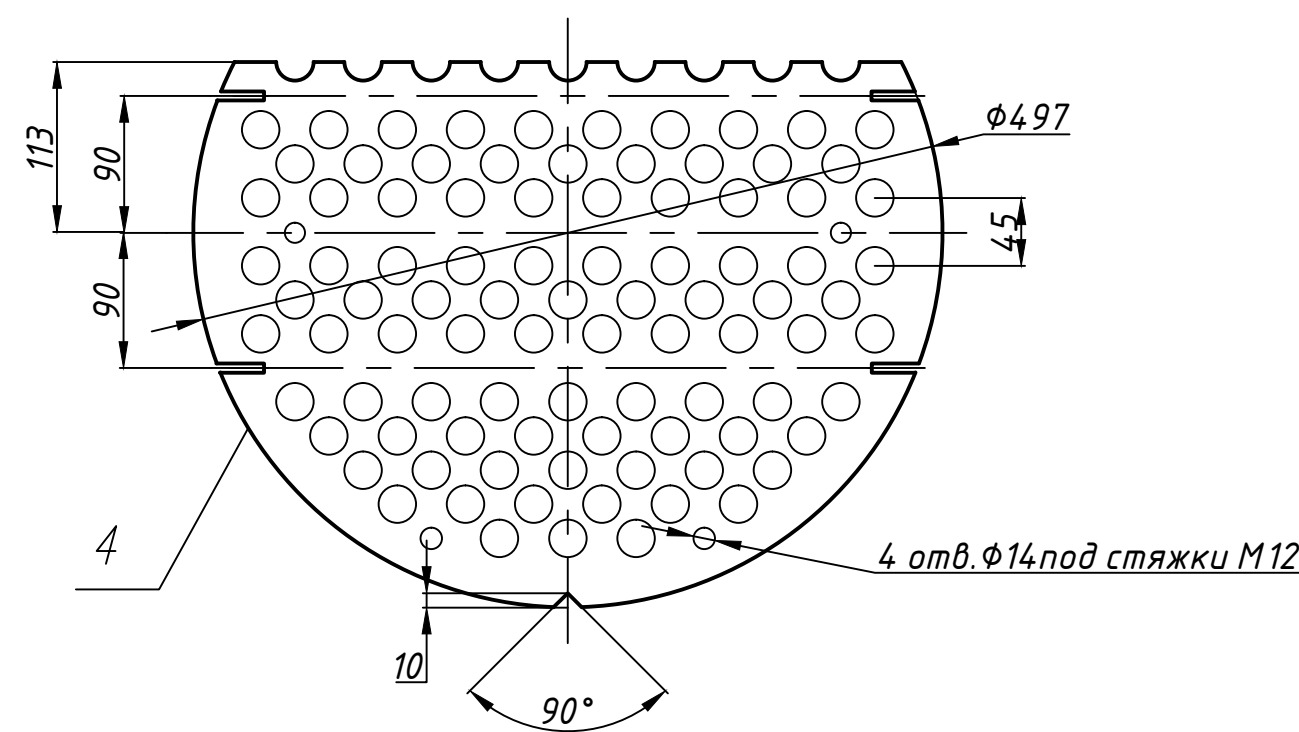


Всего - 119 отверстий

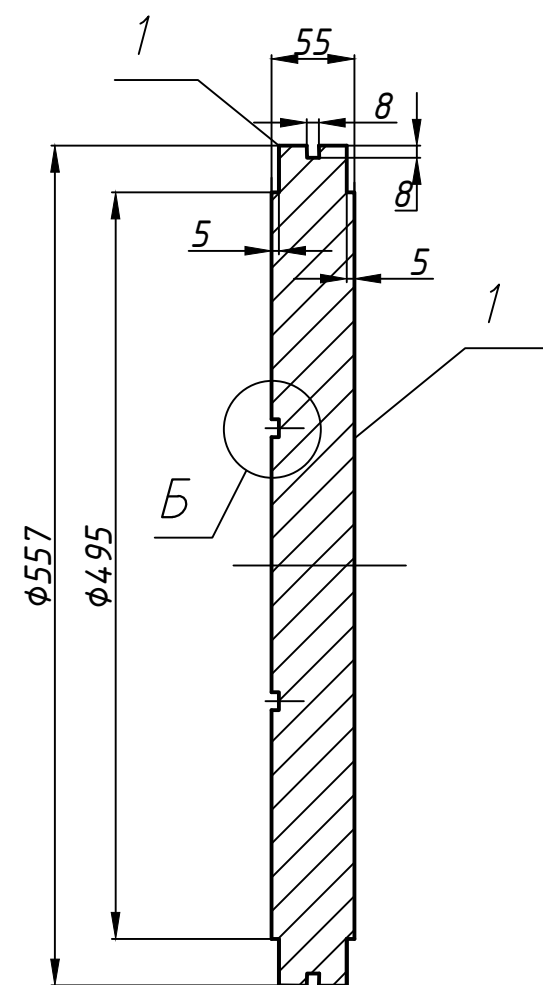
Перегородка #1, #3... #19 (1:5)



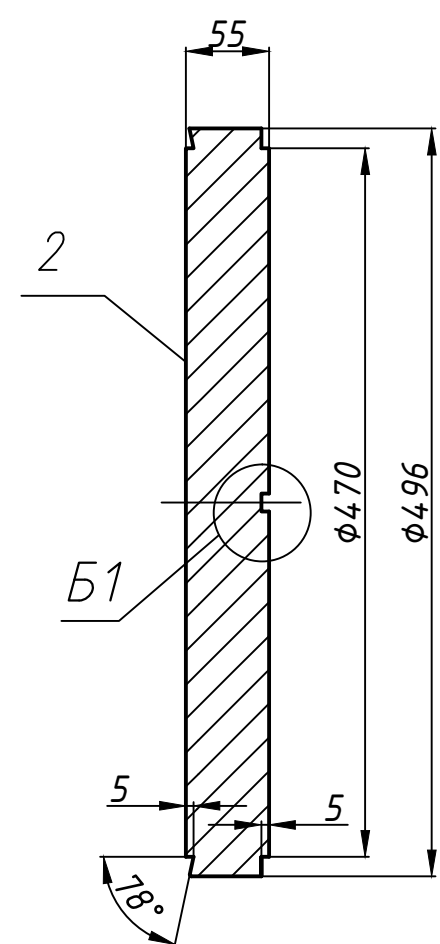
Перегородка #2, #4... #20 (1:5)



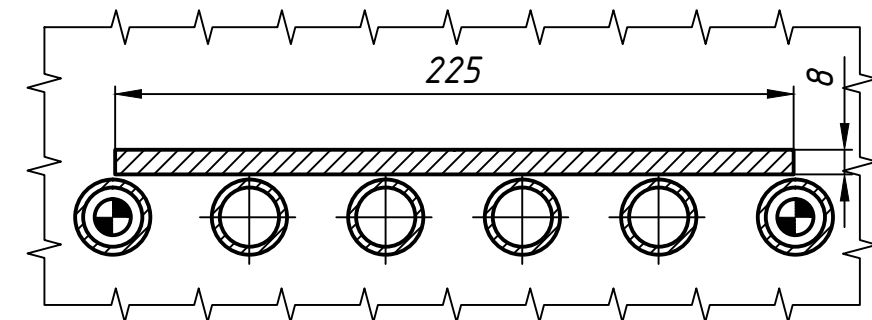
Решетка неподвижная (1:5)



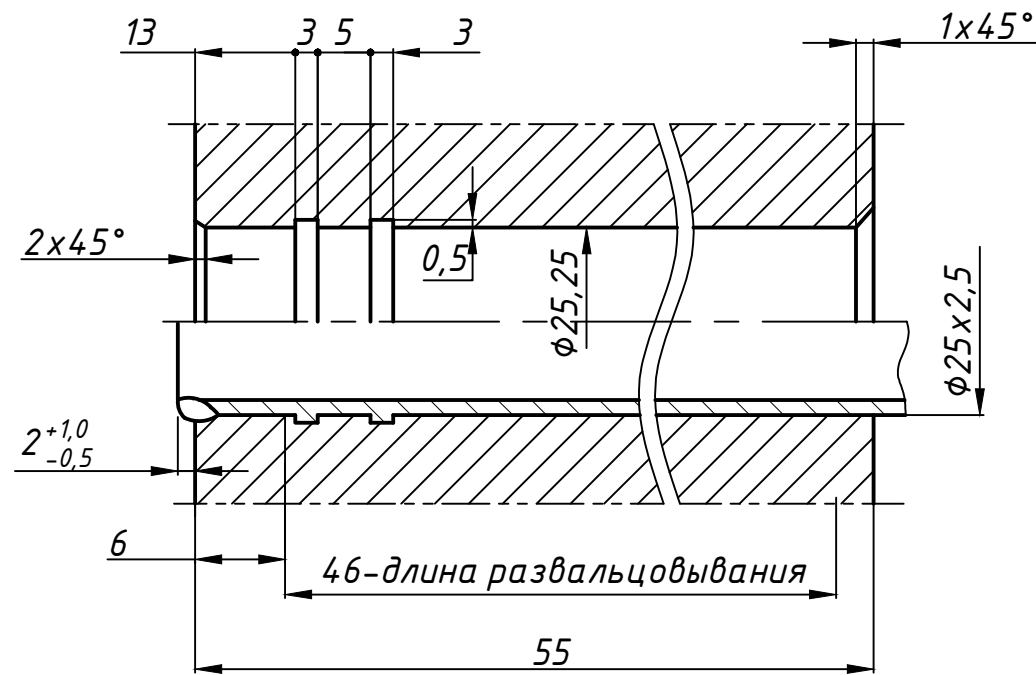
Решетка подвижная (1:5)



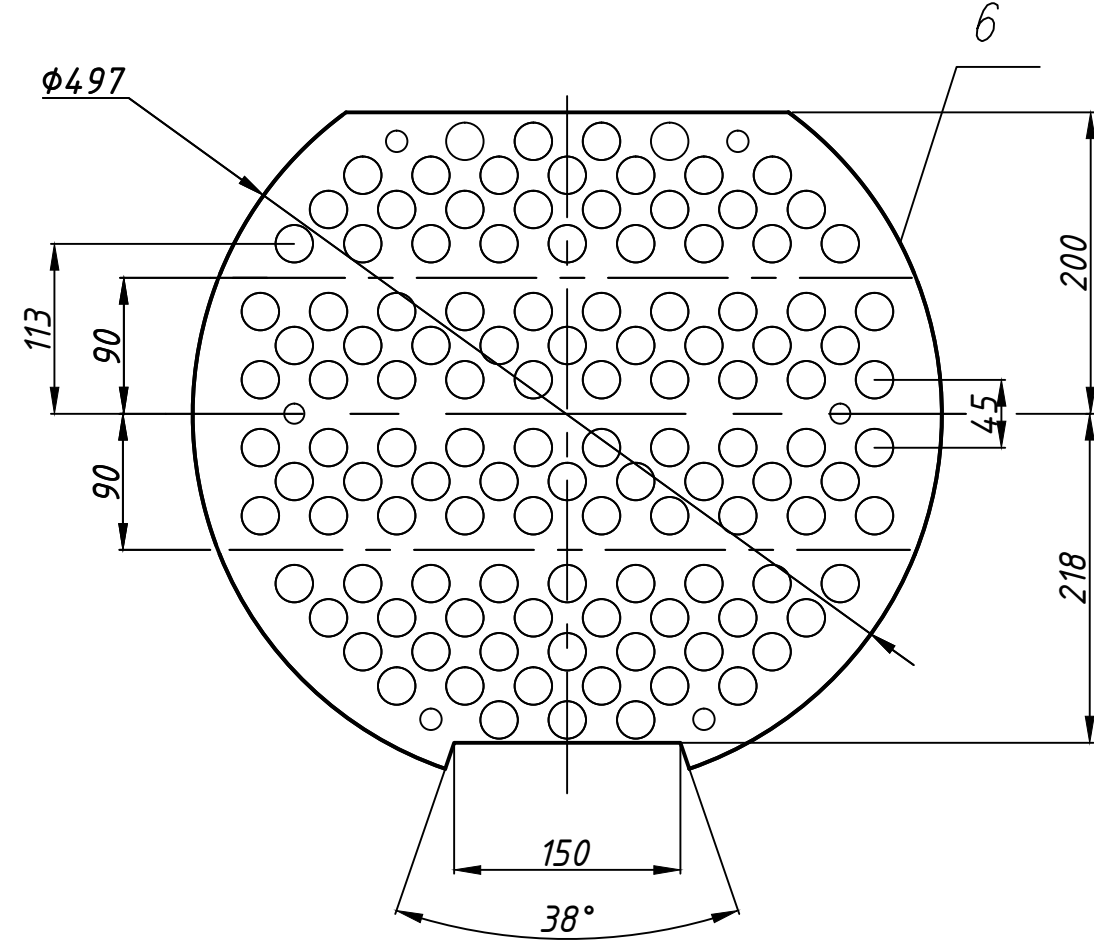
Н-Н (1:2,5)(1)



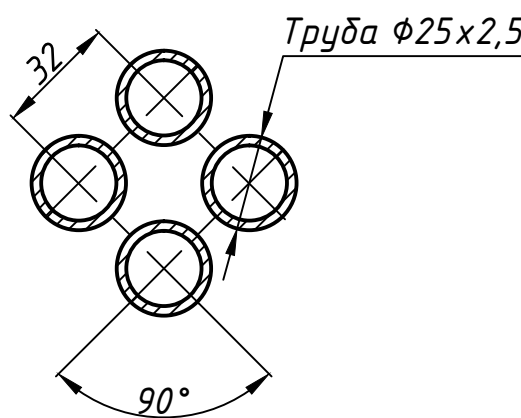
Г (1:1)(1)



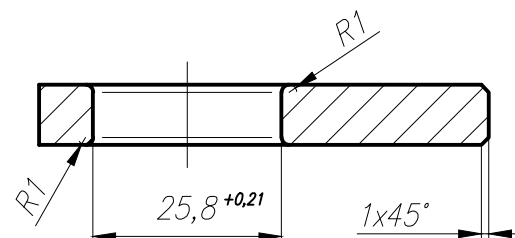
Перегородка #21 (1:5)



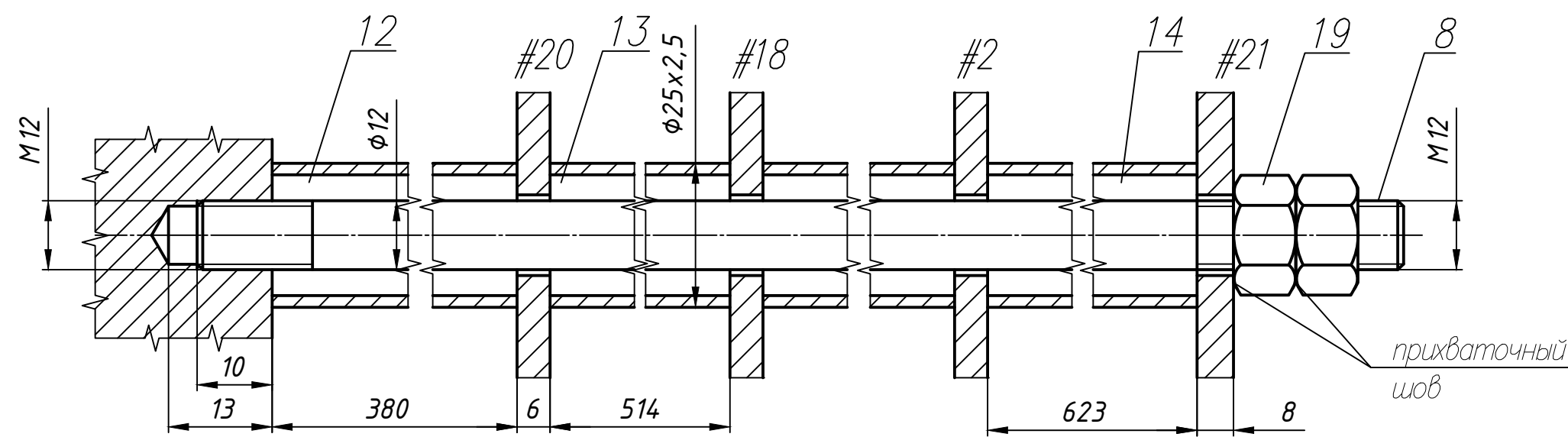
Л (1:2)



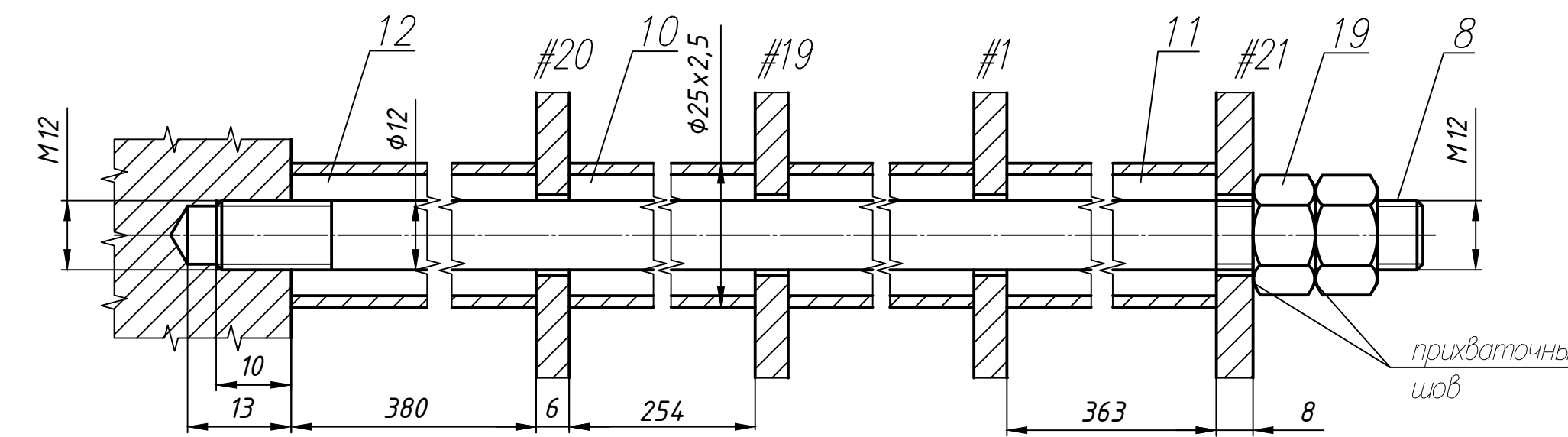
К-К (1:1)



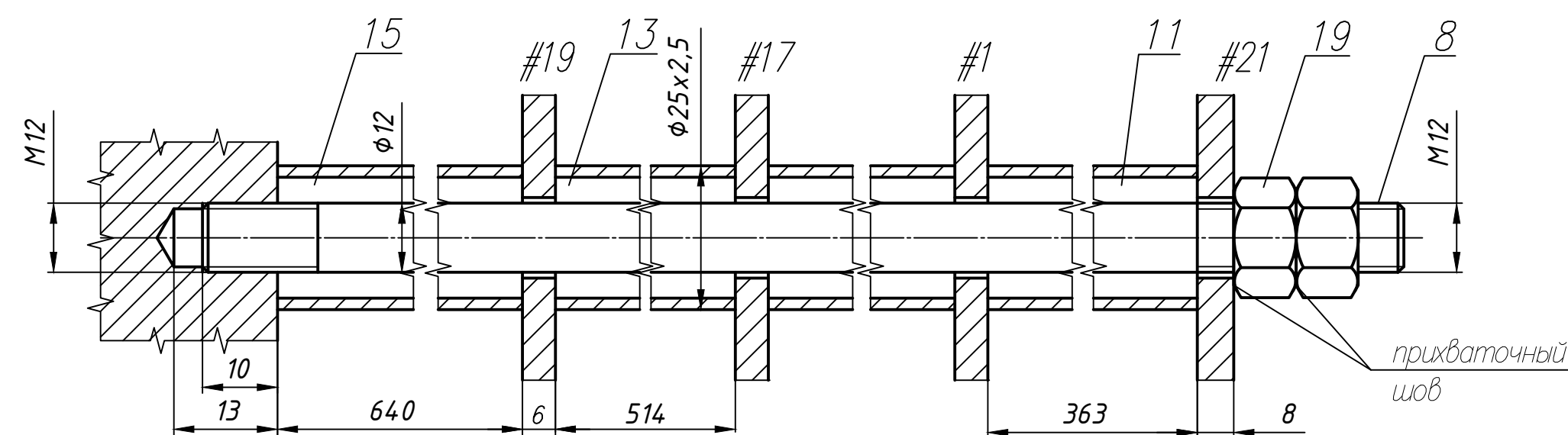
Е-Е (1:1)(1)



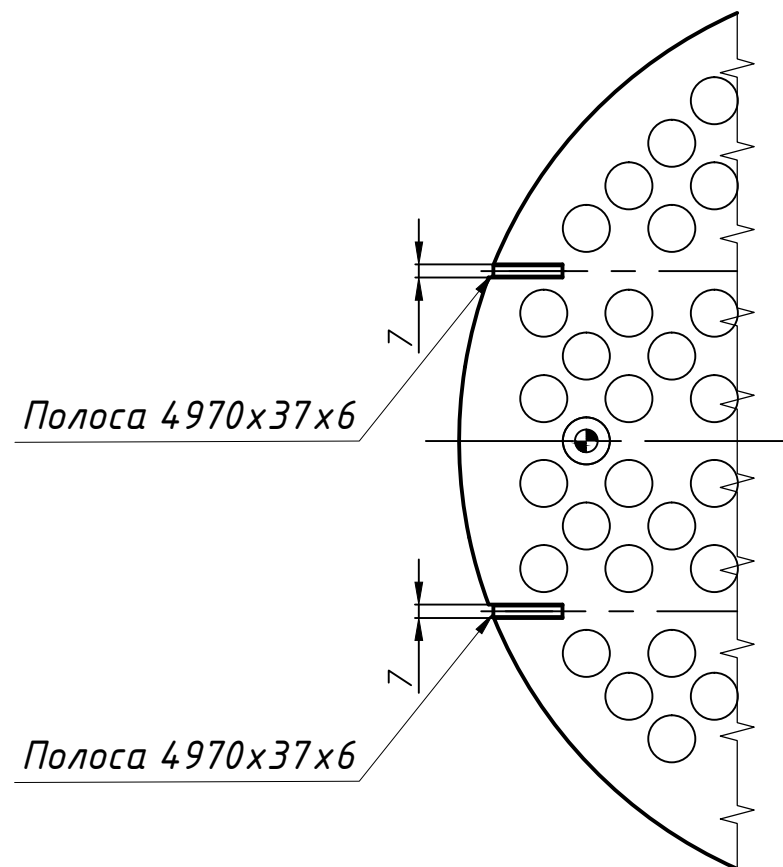
Ж-Ж (1:1)(1)



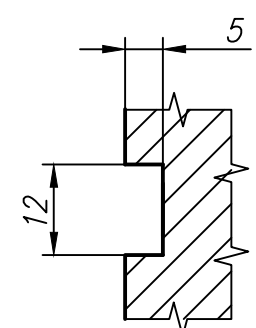
Д-Д (1:1)(1)



М (1:4)



Б (1:1)



Б1 (1:1)

